

## PREVENTION

To prevent pests from entering your home:

- Recycle paper shopping bags, boxes and trash immediately.
- Check packaged food (at the store) for packaging date, breaks in seals, and insects.
- Keep cabinets, pantries, and other food storage areas (including pet food and bird seed) clean.
- Transfer dry foods to airtight containers. Ordinary metal canisters are generally not tight enough.
- Use old packages before newer ones; opened packages before unopened ones.
- Keep drip pan under refrigerator dry.
- Store garbage containers in dry areas and empty daily.

## TUPPERWARE'S SOLUTION

Tupperware's Modular Mate system provides permanent, airtight “wrappers” for your dry goods. If bugs should find their way into your home, they will be unable to infest your pantry, kitchen or house. Added benefits of the Modular Mate system include reducing waste and saving valuable space, time, and taste. Modular Mates are backed by Tupperware's Lifetime Warranty. Call for more information or to schedule a free Modular Mates Class or Custom Kitchen Plan.



### Your Tupperware Connection:

Information gathered from:  
*Truman's Scientific Guide to Pest Control Operations*  
by Gary W. Bennett, Ph. D., et al.

# Creepy Facts About Crawly Things



**Bugs are the last thing you want in your home. The fact is, however, that unless we take precautions, they WILL find a way in. This brochure will acquaint you with some common pests found in food and food storage areas and the precautions you can take to avoid them.**

## COCKROACHES

The greatest damage caused by roaches is not from the food they eat but from their habit of feeding and living in damp, unsanitary places. They pick up organisms and dirt, spread them to food supplies, preparation surfaces, dishes, and utensils, which are then transmitted to humans, causing food poisoning, dysentery, and diarrhea.

A few interesting facts:

- There are over 3500 species worldwide. 55 live in the US.
- They have been around for over 300 million years
- They live in small cracks and crevices.
- They are not social insects, as are ants and wasps.
- They are found in all 50 states.

The most common house roach is the **German Cockroach**.

Some things you need to know about them:

- They can live up to one year.
- Females produce 4-8 egg capsules (30-48 eggs in each) in their lifetime. Hatching takes about 28 days.
- Roaches are most active at night (so you may not see them).
- They prefer to live near food and moisture (kitchens).
- They're especially fond of starches, sweets, grease, and meat products but will also eat cheese, beer, leather, baked products, starch in book bindings, glue, hair, flakes of dried skin, dead animals and some plants.
- If there's water, roaches can live about a month without food.
- When food is scarce, roaches will feed on crumbs, soiled clothing, glue on drawers, or some cosmetics.
- Roaches come into the home through very small openings, or by "hitchhiking" in grocery bags, food packages, and boxes.

## OTHER PESTS

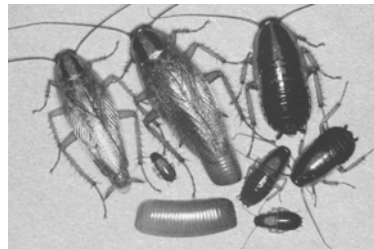
Some pests are found in the food you bring home. There's not much you can do if you see them except dispose of the infested food. If infested dry food is left in the carton or bag it comes in, and stored in your cabinet or pantry, there's a good chance other foods will be infested. If it's stored in an airtight container, pests are contained.

- **Weevils** infest whole grains (oats, wheat, rye), beans, and nuts.
- **Beetles** infest flour, breakfast cereals, dried fruit, dried peas and beans, spices, macaroni, dried meats, dried plants, and chocolate.
- **Mealworms and Grain Mites** are often found in grain, flour and macaroni.

## A FEW CREEPY THOUGHT STARTERS

"Everyone loves spaghetti, right? Have you ever gotten everything ready for a spaghetti dinner, had the water boiling, opened the box of spaghetti and seen little critters crawling around?"

"How many of you have food stored in your cabinet or pantry in a box or bag it came in the store from? Did you know that even if it isn't infested with bugs, roaches could be living in the cracks and crevices of the cardboard?"



"Did you know that even if the roaches can't get to your food, they can live a long and happy life eating the glue used in cardboard?"